



[mambaby.com](https://mambaby.com)

# Bottles & Bottle Accessories

English

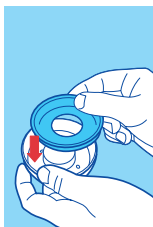
# Bottles & Bottle Accessories

## Easy Start Anti-Colic

This product meets the requirements of European Standard EN 14350.

### Instruction for use:

- Clean before first and each subsequent use.
- Before first use separate all 6 parts and place them in boiling water for 5 minutes. This is to ensure hygiene.
- Check all components before each use and throw away at the first signs of damage or weakness.
- To ensure proper cleaning/sterilising all bottle parts **MUST** be disassembled.
- Cleaning/sterilising while assembled can damage the bottle.
- Dishwasher safe on top dishwasher rack (max. 65° C / 149 F) but food colourings may discolour components
- Do not use abrasive cleaning agents. Only soft bristle brushes or soft sponges should be used. Hard scourers may scratch the plastic.
- Sterilising using one of the following methods: steam sterilising (electric or microwave according to manufacturer's instructions), boiling in water for at least 5 minutes or immersing in a liquid sterilising solution.
- Do not leave items standing in any cleaning solution for longer than recommended – this could negatively affect the product function.
- The bottle is made of polypropylene which is hygienic, easy to clean and relatively soft. Avoid any heavy pressure on it, as this could affect the function.
- Do not use pin or sharp object to enlarge feeding hole of teat.
- When first used and sometimes during use, the ventilation slit (in the raised bubble on the underside of the teat base) can stick together. This will prevent air from entering the bottle during feeding and as a result, cause the teat to collapse. Slowly brush over the bubble (ventilation) a few times with your thumb or fingers to re-open the slit.
- Ensure valve is assembled correctly and the base of the bottle is firmly attached prior to filling bottle with liquid (see figure 1, 2 & 3).
- Do not let babies self-feed.
- Store teats and valves in a dry sealed container.



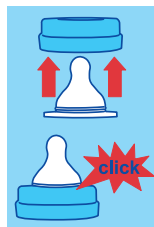
**1** Place white silicone valve into bottom ring.



**2** Press down on raised perimeter of silicone valve.



**3** Screw assembled base onto bottom of bottle in slow steady manner.



**4** Insert teat into top of bottle screw ring until you hear a "click".

- Do not leave single bottle parts in direct sunlight or heat.
- Always use only MAM teats with the MAM bottles.
- Use only sugar free food or liquids.
- To avoid injury, do not let baby walk with bottle.
- Do not put your baby to bed with bottle. Prolonged contact with liquids may cause severe tooth decay.
- Bottle teat fits all MAM wide neck bottles and the Trainer.

### Heating instructions:

- NEVER pour boiling water into the bottle.
- Place in a bottle warmer, under hot running water or in a container of heated water
- NEVER heat or cool a sealed bottle. Remove the protective cap and teat (with screw ring) before heating, especially before bottle warmer and microwave heating. Do not overheat as this may damage the bottle.
- Take care when heating in the microwave.
- Stir thoroughly after heating to evenly distribute heat. Allow the standing time recommended by the microwave manufacturer. Test the temperature before serving.
- Wrap cloth or towel around bottom of bottle and shake to absorb any excess water after warming in a bottle warmer or boiling water.
- After warming the bottle in a bottle warmer or boiling water it is recommended to tighten the bottom of the bottle.
- Do not place bottle in heated oven.

### For your child's safety and health

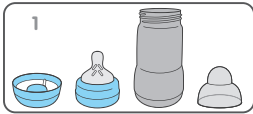
#### WARNING!

- Always use this product with adult supervision.
- Never use feeding teats as a soother.
- Continuous and prolonged sucking of fluids will cause tooth decay.
- Always check food temperature before feeding.
- Keep all components not in use out of the reach of children.

### Self-sterilising function of Easy Start:

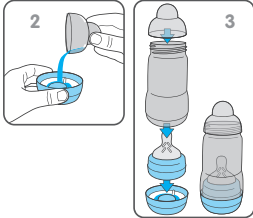
The self-sterilising function of the Easy Start is proven to be effective for killing common household germs and bacteria. This method is completely sufficient and safe. For the best results, please follow all instructions carefully and use only as directed.

This practical and time-saving function can be achieved in 3 simple steps. Always thoroughly clean individual bottle parts before beginning this process!



**Step 1:** Assemble clean bottle parts as follows: base with silicone valve, teat with screw ring, bottle body and lid.

**Step 2:** Fill the base with silicone valve with 20 ml of cool water. The protective cap makes a practical measuring cup.



**Step 3:** Place the screw ring with teat in the bottle base. Place the bottle body on it (optionally screw in slightly to avoid pouring out hot water by removing the bottle from microwave). Place the protective cap on top.

#### Sterilising in the microwave:

■ Set the microwave timer according to the number of bottles being simultaneously cleaned. Set microwave from 500 to 1000 Watts.

Number of bottles sterilised at the same time	1	2	3	4	5	6
Estimated duration of sterilising (min)	3	4	5	6	7	8

■ Allow bottle to cool down before removing from microwave. Recommended cooling time: 10 minutes at opened microwave door.

After the process is complete, the Easy Start bottle remains disinfected up to **48 hours** after self-sterilising in the microwave, provided that it stays assembled as shown on Step 3.

- Pour away the leftover water from the base. Allow bottle parts to dry.
- Always store bottle assembled.

#### Additional Instructions:

- Follow the instructions in the user manual of your microwave or multifunctional device.
- Ensure that all parts from the self-sterilising bottle and microwave (including waveguide cover and turntable) are COMPLETELY clean and free from dirt, food residue, fat or oil splashes. If not this could lead to the product melting, the microwave sparking or the waveguide-cover burning!
- The self-sterilising bottle should only be placed on solid and flat surfaces.
- Do not put the self-sterilising bottle in the center of the turntable as this could result in an uneven heat distribution.
- Do not leave your microwave unattended during the sterilising process.
- Never place the device in the microwave without water
- Stop the microwaving process immediately if all the water has been vaporised!
- Filling the base with too much or not enough water can damage the bottle.
- Always set the microwave to the correct power and time.
- If using a combination microwave oven, ensure that the self-sterilising bottle is not exposed to the heat of the grill because this will damage it.
- TAKE CARE when handling recently disinfected items: they may still be hot.
- Wash hands before touching disinfected items.
- Always store the bottle dry.
- Hold the self-sterilising bottle upright when removing from microwave to avoid spilling out hot residual water.
- Do not wash self-sterilising bottle after disinfection. Do not touch the teat after disinfection. Handle teat by using the screw ring.

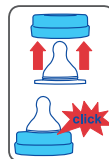
#### Feel Good – Premium Glass Bottle

This product meets the requirements of European Standard EN 14350.

#### Instruction for use:

- Clean before first and each use.
- Before first use place all components separately in boiling water for 5 minutes. This is to ensure hygiene.
- Check all components before each use and throw away at the first sign of weakness, cracks or glass fragments inside and outside the bottle.
- To ensure proper cleaning/sterilising all bottle parts MUST be disassembled.
- Cleaning/sterilising while assembled can damage the bottle itself or the plastic components.
- Clean the bottle thoroughly before sterilising.
- Dishwasher safe on top dishwasher rack (max. 65° C) but food colourings may discolour plastic components.
- Do not place glass bottle on the top rack of the MAM microwave steriliser as the weight of the bottle could deform the rack.

- Do not use abrasive cleaning agents or any metal utensils for cleaning or stirring contents. This can damage the glass and/or the printing.
  - Only soft bristle brushes or soft sponges should be used to avoid damaging the glass and/or the printing.
  - Sterilising using one of the following methods: steam sterilising (electric or microwave according to manufacturers instructions), boiling in water for at least 5 minutes or liquid sterilising solution.
  - Do not leave items standing in any cleaning solution for longer than recommended – this could negatively affect the product function.
  - Sudden temperature changes can cause glass bottles to crack or break.
  - Do not leave glass bottles in boiling water unattended as glass can be damaged through uncontrolled impact with the pot or other glass components. We recommend boiling the glass body separately.
- The bottle is made of natural glass which is hygienic, easy to clean and relatively fragile. Avoid putting heavy pressure on it, as the glass bottle could break.
- Do not use pin or sharp object to enlarge feeding hole of the teat.
  - When first used and sometimes during use, the ventilation slit (in the raised bubble on the underside of the teat base) can stick together. This will prevent air from entering the bottle during feeding and as a result, cause the teat to collapse. Slowly brush over the bubble (ventilation) a few times with your thumb or fingers to re-open the slit.
  - Store teats in a dry sealed container.
  - Do not leave individual bottle parts in direct sunlight or heat as this may affect the product function.
  - Use sugar free food or liquids only.
  - Do not let children feed themselves with a glass bottle.
  - To avoid injury, do not let children walk with a glass bottle.
  - Do not put your baby to bed with bottle. Prolonged contact with liquids may cause severe tooth decay.
  - Always use only MAM teats with the MAM bottles.
  - The bottle teat fits all MAM wide neck bottles and the Trainer.
  - Insert teat into top of bottle screw ring until you hear a “click”.



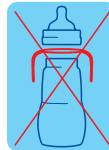
#### Heating instructions:

- NEVER pour boiling water into the bottle.
- Place in a bottle warmer, under hot running water or in a container of heated water.
- NEVER heat or cool a sealed bottle. Remove the protective cap and teat (with screw ring) before heating, especially before bottle warmer and microwave heating. Do not overheat as this may damage the bottle.
- Take extra care when heating in the microwave.
- Stir thoroughly with plastic or soft spoon after heating to evenly distribute heat. Allow the standing time recommended by the microwave manufacturer. Test the temperature before serving.
- Beware of very hot glass body after heating.
- Do not place bottle in heated oven.

#### For your child's safety and health

##### WARNING!

- Glass bottles may break.
- Always use this product with adult supervision.
- Never use feeding teats as a soother.
- Continuous and prolonged sucking of fluids will cause tooth decay.
- Always check food temperature before feeding.
- Keep all components not in use out of the reach of children.
- The bottle is compatible with MAM teats, sealing discs and breast pump.
- Do not use it with handles as it may break if dropped.



#### Easy Active Baby Bottle

This product meets the requirements of European Standard EN 14350.

##### Instruction for use:

- Clean before first and each subsequent use.
- Before first use place all components separately in boiling water for 5 minutes. This is to ensure hygiene.
- Check all components before each use and throw away at the first signs of damage or weakness.
- To ensure proper cleaning/sterilising all bottle parts MUST be disassembled.
- Cleaning/sterilising while assembled can damage the bottle.
- Dishwasher safe on top dishwasher rack (max. 65° C / 149 F) but food colourings may discolour components.
- Do not use abrasive cleaning agents. Only soft bristle brushes or soft sponges should be used. Hard scourers may scratch the plastic.
- Sterilise using one of the following methods: steam sterilising (electric or microwave according to manufacturers instructions), boiling in water for at least 5 minutes or liquid sterilising solution.
- Do not leave items standing in any cleaning solution for longer than recommended – this could negatively affect the product function.
- When first used and sometimes during use, the ventilation slit (in the raised bubble on the underside of the teat base) can stick together. This will prevent air from entering the bottle during feeding and as a result, cause the teat to collapse. Slowly brush over the bubble (ventilation) a few times with your thumb or fingers to re-open the slit.
- Do not let babies self-feed.
- Store teats in a dry sealed container.
- Do not leave individual bottle parts in direct sunlight or heat.
- Use only sugar free food or liquids.
- To avoid injury, do not let baby walk with bottle.
- Do not put your baby to bed with bottle. Prolonged contact with liquids may cause severe tooth decay.
- Bottle teat fits all MAM wide neck bottles and the Trainer.
- Insert teat into top of bottle screw ring until you hear a “click”.



## For your child's safety and health

### WARNING!

- Always use this product with adult supervision.
- Never use feeding teats as a soother.
- Continuous and prolonged sucking of fluids will cause tooth decay.
- Always check food temperature before feeding
- Keep all components not in use out of the reach of children.

## Trainer +

This product meets the requirements of European Standard EN 14350.

### Instruction for use:

- Clean before first and each use.  
Before first use separate all parts and place them in boiling water for 5 minutes. This is to ensure hygiene. Inspect carefully all components before each use. Throw away at the first signs of damage or weakness.
- Before first use, press gently the mouthpiece of the teat/spout to check if the slits properly open.
- When first used and sometimes during use, the ventilation slit (in the raised bubble on the underside of the teat/spout base) can stick together. This will prevent air from entering the Trainer+ during feeding and as a result, the teat/ spout collapsing. Slowly brush over the bubble (ventilation) a few times with your thumb or fingers to re-open the slit.
- To ensure proper cleaning/sterilising all bottle parts MUST be disassembled. Cleaning/sterilising while assembled can damage the bottle.
- All parts are top rack dishwasher safe (up to 65°C). Food colourings may discolour components.
- Clean the mouthpiece of the spout with special care to prevent damaging the membrane. Do not use abrasive cleaning agents. Only soft bristle brushes or soft sponges should be used. Hard scourers may scratch the plastic.
- Sterilise using one of the following methods: steam sterilising (electric or microwave according to manufacturers instructions), boiling in water for at least 5 minutes or liquid sterilising solution. After boiling or sterilising allow all parts to cool.
- Do not leave single bottle parts in direct sunlight or heat, or leave in sterilising solution for longer than recommended, as this may affect the product function.
- The Trainer+ is made of polypropylene which is hygienic, easy to clean and relatively soft. Avoid any heavy pressure on it, as this could affect the function.
- Store teats/spouts in a dry, sealed container.
- Do not use pin or sharp object to enlarge feeding slits.
- To avoid injury, do not let baby walk with Trainer+.
- Do not put your baby to bed with Trainer+. Prolonged contact with liquids may cause severe tooth decay.
- Use sugar free food or liquids only.
- Teat, spout and handles fit all MAM Bottles and the Trainer+, except MAM Easy Start Anti-Colic 130ml.

**Assembling TEAT/SPOUT:** Insert teat/spout into top of bottle screw ring until you hear a "click". Place the handles over the bottle neck and screw the teat/spout onto the bottle tightly

### Heating instructions:

- NEVER pour boiling water into the Trainer+.
- NEVER heat or cool a sealed Trainer+. Remove the protective cap and spout or teat (with screw ring) before heating, especially before microwave and bottle warmer heating.
- Take extra care when microwave heating. Stir thoroughly after heating to evenly distribute heat.
- Allow the standing time recommended by the microwave manufacturer and test the temperature before serving.

## For your child's safety and health

### WARNING!

- Always use this product with adult supervision.
- Never use feeding teats as a soother.
- Continuous and prolonged sucking of fluids will cause tooth decay.
- Always check food temperature before feeding.
- Keep all components not in use out of the reach of children.

