



mambaby.com

Cleaning & Sterilising

English

Cleaning & Sterilising

MAM Soft Brush

Instructions for use:

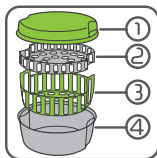
- The Bottle Brush is made from high quality materials: bristles and teat brush: TPE; handle: PP
- Clean before first use and at regular intervals thereafter.
- Check all components before each use and throw away at the first signs of damage or weakness.
- Defect brushes can damage bottle and teat.
- To ensure hygiene rinse the bottle brush thoroughly after use and let it dry in a well-aired place.
- For disinfection wash with detergent and warm water.
- The bottle brush can be placed in a dishwasher (cutlery or top rack) at low temperatures (~ 60°C).
- Do not rest the bottle brush directly on the soft bristles in the dishwasher. Place the bottle brush in the cutlery or top rack, bristles up for dishwashing.
- Do not use aggressive cleaning agents.
- Food colourings may discolour the bottle brush.
- Do not boil, steam or microwave sterilise.
- Otherwise deformation of bristles can occur.
- Suitable for cleaning all bottles and teats.
- The Soft Brush is also especially suitable for cleaning MAM Cups.

Warning: The Soft Brush is not a toy. Please keep out of the reach of babies and children.

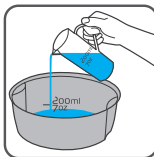
Microwave Steam Steriliser

Microwave Steam Steriliser Usage:

- 1) Carefully wash all items (soothers, bottles etc.) and components in mild soapy water and then rinse with clean water.
- 2) Open the latch on the microwave steam steriliser. Remove the lid. Take the upper and lower baskets out as necessary.



- 1 lid
- 2 upper basket
- 3 lower basket
- 4 base

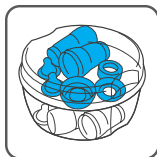


3) Pour exactly 200ml / 7 UK fl oz into the base of the microwave steam steriliser. The use of a measuring cup is recommended. Please pay attention to the measure marking inside the base! Ensure an exact measure of water.

4) To begin the cleaning process, disassemble each product to its individual components. MAM Bottles and MAM Cups must be completely disassembled, including removing the vented base element. Steaming assembled or partially assembled components can damage the bottle.

5) Place the bottles and components in the microwave steam steriliser. In the MAM Microwave Steam Steriliser the products can be flexibly arranged on 2 levels and the steriliser holds up to:

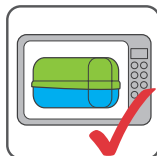
- 6 MAM Easy Start 5.5 oz bottles or
 - 4 MAM Start 9 oz bottles or
 - 5 MAM Easy Active 11 oz bottles or
 - 6 MAM Easy Active 9.5 oz bottles
- incl. additional products like soothers.



6) With the products inside, replace the lid and close the latches. The lid must "click" into place.

7) Place the appliance in the microwave. Should the appliance not fit into the microwave, please check that the lid has "clicked" into place correctly.

8) The appliance is suitable for microwaves from 650 to 1850 Watts. Time required to properly complete the cycle will depend on the power



of the microwave used. Please follow the times shown in the table:

Wattage	Time*	Cooling time
650 W – 1000 W	11 min	3 min
1050 W – 1800 W	6 min	3 min
1850 W:	5 min	3 min

*max. power

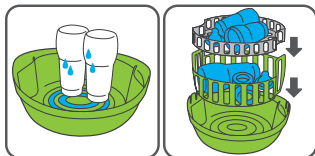
9) Allow the microwave steam steriliser to cool down before removing from the microwave. Recommended cooling time: in minimum 3 minutes at opened microwave door. Hold the steriliser straight when removing.



10) After the process is complete, products and components stay disinfected for up to 48h provided the box is not opened.

11) **CAUTION** when opening the steriliser after use. Hot water vapour can escape and the remaining water may be very hot – SCALDING HAZARD.

12) Residual water in the products can be removed using with the draining function of the lid. There are drainage grooves on the inside of the lid. Products can be placed in the inside of the upturned lid individually or with the baskets.



13) Use the tongs to remove and assemble the components, especially for components in direct contact with baby's mouth.

14) Pour away any water from inside the steriliser and dry with a soft cloth.

Directions for use with cold water sterilising solution:

1) Carefully wash the bottles and components in mild soapy water and then rinse with clear water.

2) Various commercially available anti-bacterial solutions or tablets can be used in the MAM Microwave Steriliser.

3) Always follow the manufacturer's instructions.

4) Fill the base of the microwave steam steriliser with water. The quantity of water and the amount of time required depends on the instructions from the manufacturer of the solution or tablets and the number of products you wish to clean. All components must be fully immersed.



5) Air bubbles in bottles and other components affect proper cleaning and should be removed.

6) Sterilising solution must be regularly renewed, according to the manufacturer's instructions.

7) Pour away any surplus solution.

General Information:

- The microwave steam steriliser should only be placed on solid, flat, dry and non-flammable surfaces.
- The microwave steam steriliser is designed for use with commercially available microwave appliances. There must be enough space between the microwave and steriliser.
- The steriliser must not touch the microwave walls. Do not force the steriliser into the microwave. Using it in too small a microwave can damage the steriliser and the microwave.
- Do not use the device for metal or electronic parts. Take care to remove any elements from composite products that cannot withstand this treatment.
- Filling the steriliser with inaccurate water measures can damage the steriliser and the microwave. Always use the correct quantity of water. Too much or not enough water will both result in inferior performance. Never place in the microwave without water.
- Do not use bleach.
- TAKE CARE when handling recently cleaned items: they may still be hot.
- Wash your hands before touching disinfected items.
- Do not use abrasive cleaning agents. Please only use soft brushes or sponges. Hard objects can scratch the surface.
- Microwave steam steriliser can be washed in the dishwasher.
- Only store the appliance dry.
- To avoid lime scale, pour any surplus water away and dry the appliance with a soft cloth. Slight lime scale can be wiped away with a damp cloth. More stubborn lime scale can be removed with diluted household vinegar.
- To avoid stubborn lime scale and safeguard the steriliser's proper function, it is recommended that the steriliser be regularly de-scaled, especially in regions with hard water.

For your child's safety and health**WARNING!**

- Keep all components out of the reach of babies and children.
- To avoid stubborn lime scale and safeguard the steriliser's proper function, it is recommended that the steriliser be regularly de-scaled, especially in regions with hard water.

