



[mambaby.com](https://mambaby.com)

# Soother & Soother Accessories

English

# Soother & Soother Accessories

## Start / Original / Air / Perfect all sizes

These products meet the requirements of European Standard EN 1400.

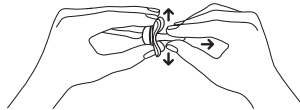
### Instruction for use:

- Before first use boil in water for 5 minutes or sterilise. Allow to stand for a further 5 minutes before giving it to baby.
- During cleaning a small amount of water may enter the teat. This can be expelled by squeezing the teat. This is to ensure hygiene.
- Clean before each use.
- Do not use aggressive cleaning agents.
- Never dip the teat in sweet substances or medication. This can cause tooth decay.
- To ensure safety and hygiene replace the soother every 1-2 months.
- Do not worry if the soother becomes lodged in the mouth. It can not be swallowed and is designed to cope with such an event. Remove as gently as possible.
- MAM recommends giving up soother usage at 3 years of age.

### For your child's safety and health

#### WARNING!

- Inspect carefully before each use. Pull the soother in all directions. Throw away at the first signs of damage or weakness.
- Only use dedicated soother holders tested to EN 12586. Never attach other ribbons or cords to a soother, your child may be strangled by them.
- Do not leave a soother in direct sunlight or near a source of heat or leave in sterilising solution for longer than recommended, as this may weaken the teat.



## Night / Perfect Night all sizes

These products meet the requirements of European Standard EN 1400.

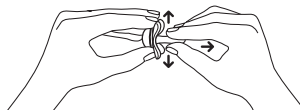
### Instruction for use:

- Before first use boil in water for 5 minutes or sterilise. Allow to stand for a further 5 minutes before giving it to baby.
- During cleaning a small amount of water may enter the teat. This can be expelled by squeezing the teat. This is to ensure hygiene..
- Clean before each use.
- Do not use aggressive cleaning agents.
- Never dip the teat in sweet substances or medication. This can cause tooth decay.
- To ensure safety and hygiene replace the soother every 1-2 months.
- Do not worry if the soother becomes lodged in the mouth. It can not be swallowed and is designed to cope with such an event. Remove as gently as possible.
- Keep the soother in daylight – not direct sunlight – during the day so that the knob glows in the dark.
- MAM recommends giving up soother usage at 3 years of age.

### For your child's safety and health

#### WARNING!

- Inspect carefully before each use. Pull the soother in all directions. Throw away at the first signs of damage or weakness.
- Only use dedicated soother holders tested to EN 12586. Never attach other ribbons or cords to a soother, your child may be strangled by them.
- Do not leave a soother in direct sunlight or near a source of heat or leave in sterilising solution for longer than recommended, as this may weaken the teat.



## Latex soothers

These products meet the requirements of European Standard EN 1400.  
Produced from natural rubber latex. Keep away from sunlight and heat.

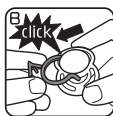
## Steriliser Box Single

### Instruction for use:

- Remove tamper-proof closure and any stickers from the box.
- Perfect:** Remove any stickers from the box.
- Wash soother and box with mild soapy water and then rinse with clear water before use. This is to ensure hygiene.
- When using the self-sterilising method, please ensure the soother, box and microwave (including the waveguide-cover and turntable) are COMPLETELY CLEAN and free from dirt, food residue, fat or oil splashes. If not, this could lead to the product or box melting and the microwave sparking or the waveguide cover burning!
- First, hold box and fill to the mark with 25ml / 0.9 fl oz of water (Fig. A).
- Next, firmly attach the holding clip to the soother (fig. B) and then place the device in the box with the teat facing down (Fig. C).
- Close box and heat in the microwave at 750 – 1000 watts.
- Set the microwave timer according to the number of boxes and soothers being simultaneously sterilised.

Number of <b>Single Boxes</b>	1	2	3	4	5	6
Recommended sterilising time in minutes	3	5	6	7	8	9

- Follow the user manual- instructions of your microwave. Don't put the steriliser box at the center of the turntable. Don't leave your microwave unattended during sterilisation process! Stop the microwaving- process immediately if whole water is vaporized.
- Allow to cool for at least 5 minutes.
- Open microwave. CAUTION! The box, water and soothers may still be very hot after the 5 minute cooling period!
- After microwave sterilising, soothers kept in the closed box will remain disinfected up to 48 hours.
- Check the temperature of the soothers before use!
- Improper water level, power level or time setting can damage the microwave, soothers and box and result in poor disinfection!
- Retain holding clip for future use. In case of sterilisation without holding clip place soother in the box with the teat facing down.
- Keep steriliser box away from children.



Disinfected in 3 minutes – for up to 48 hrs.



750 – 1000 W

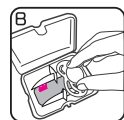
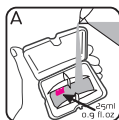
## Steriliser Box Double

### Instruction for use:

- Remove tamper-proof closure and any stickers from the box.
- Wash soother and box with mild soapy water and then rinse with clear water before use. This is to ensure hygiene.
- When using the self-sterilising method, please ensure the soother, box and microwave (including the waveguide-cover and turntable) are COMPLETELY CLEAN and free from dirt, food residue, fat or oil splashes. If not, this could lead to the product or box melting and the microwave sparking or the waveguide cover burning!
- First, hold box and fill to the mark with 25ml / 0.9 fl oz of water (Fig. A).
- Next, place soother(s) in the box with the teat facing down (Fig. B).
- Close box and heat in the microwave at 750 – 1000 watts.
- Set the microwave timer according to the number of boxes and soothers being simultaneously sterilised.

Number of <b>Double Boxes</b> / Number of <b>Double Boxes</b>	1	2	3
Recommended sterilising time in minutes / Recommended sterilising time in minutes	3	7	9

- Follow the user manual- instructions of your microwave. Don't put the steriliser box at the center of the turntable. Don't leave your microwave unattended during sterilisation process! Stop the microwaving- process immediately if whole water is vaporized.
- Allow to cool for at least 5 minutes.
- Open microwave. CAUTION! The box, water and soothers may still be very hot after the 5 minute cooling period!
- Open box and drain remaining water. Leave soothers to dry in slightly open box.
- After microwave sterilising, soothers kept in the closed box will remain disinfected up to 48 hours.
- Check the temperature of the soothers before use!
- Improper water level, power level or time setting can damage the microwave, soothers and box and result in poor disinfection!
- For use only with MAM Soothers!
- Keep steriliser box away from children.



Disinfected in 3 minutes – for up to 48 hours.



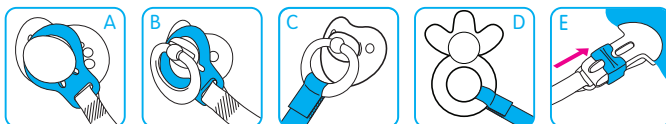
750 – 1000 W

## Clip, Clip & Cover

The clip meets the requirements of EN 12586: 2007.

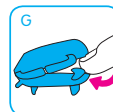
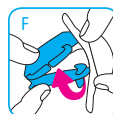
### Instruction for use:

- When used with a MAM or other button soother, press the ring over the button of the soother (Diagram A).
- When used with a soother with handle, put the transparent ring over the whole handle of the soother (Diagram B), or attach the ribbon directly to the soother handle, using the hook & loop fastener (Diagram C).
- The hook & loop fastener securely holds not only soothers but also teethers, small toys and much more (Diagram D).
- The clip fastener is opened by moving the slider towards the leash and closed by clicking the slider towards the rounded end (Diagram E).
- The clip should only be attached to garments.
- The clip fastener should always be stored and cleaned in the open position to avoid the clip spring losing its strength. Do not store in the closed position.
- Regularly clean the clip with warm water and mild cleaning agent. Rinse thoroughly. DO NOT BOIL, steam or microwave sterilise.
- Do not use solvents or abrasive cleaning agents as these could damage the product.



## Clip & Cover

- Clean the teat cover in the same way as the clip or clean in the dishwasher. The teat cover can also be sterilised by boiling (5 min.), or in a microwave steriliser or steam steriliser. Remove the teat cover from the leash before sterilising or dishwashing.
- Open the teat cover by twisting it when clipped onto the soother teat (Diagram F). When not clipped onto the soother teat, open it by pushing your finger inside the opening (Diagram G).



### For your child's safety and health

#### WARNING!

- Before each use check carefully. Throw away at the first signs of damage or weakness.
- Never lengthen the soother holder!
- Never attach to cords, ribbons, laces or loose parts of clothing. The child may be strangled.
- The use of a clip when baby is sleeping or in bed, crib or cot is not recommended.
- Ensure both ends of the clip are fastened before leaving your child unattended.
- The clip should not be used as a teether or toy.

## Clip it!, Clip it! & Cover

The clip meets the requirements of EN 12586: 2007.

### Instruction for use:

- When used with a MAM or other button soother, press the ring over the button of the soother (Diagram A).
- When used with a soother with handle, put the transparent ring over the whole handle of the soother (Diagram B).
- The flexible loop securely holds not only soothers but also teethers, small toys and much more (Diagram C).
- The clip fastener is opened by moving the slider towards the leash and closed by clicking the slider towards the rounded end (Diagram D).
- The clip should only be attached to garments.
- The clip fastener should always be stored and cleaned in the open position to avoid the clip spring losing its strength. Do not store in the closed position.
- Regularly clean the clip and the flexible ring with warm water and mild cleaning agent. Rinse thoroughly. DO NOT BOIL, steam or microwave sterilise.
- Do not use solvents or abrasive cleaning agents as these could damage the product.
- The length controller can be used to lengthen or shorten the clip leash by simply pulling it up or down along the leash.
- Do not worry if your child's arm, wrist or finger gets stuck in the loop of the strap. Remove as gently as possible. The textile loop will not cause any harm.



## Clip it! & Cover

- Clean the teat cover in the same way as the clip or clean in the dishwasher. The teat cover can also be sterilised by boiling (5 min.), or in a microwave steriliser or steam steriliser. Remove the teat cover from the leash before sterilising or dishwashing.
- Position the teat cover directly over the soother teat and close. The teat cover is securely attached when it snaps together around the base of the teat, directly behind the soother shield.
- Open the teat cover by twisting it when clipped onto the soother teat (Diagram E). When not clipped onto the soother teat, open it by pushing your finger inside the opening (Diagram F).



## For your child's safety and health

### WARNING!

- Before each use check carefully. Throw away at the first signs of damage or weakness.
- Never lengthen the soother holder!
- Never attach to cords, ribbons, laces or loose parts of clothing. The child may be strangled.
- The use of a clip when baby is sleeping or in bed, crib or cot is not recommended.
- Ensure both ends of the clip are fastened before leaving your child unattended.
- The clip should not be used as a teether or toy.

## MAM Pod

No metal parts. Only plastic materials. PVC free. Materials conform to EN 71-3

- Clean before each use by rinsing the MAM Pod under warm water using mild soap or hand dishwashing detergent. Do not use the rough side of sponge.
- Rinse thoroughly – dry afterwards.
- As the pod is a reusable packaging and no childcare product, keep the pod out of the reach of children.
- Never lengthen the leash as this could present a strangulation danger.
- Throw away at first signs of damage.



