



[mambaby.com](https://mambaby.com)

# MAM Teat

English

## MAM Teat

This product meets EN 14350. Bottle teat fits all MAM wide neck bottles and the Trainer+.

### Instruction for use:

- Clean before first and each subsequent use.
- Before first use and regularly place in boiling water for 5 minutes. This is to ensure hygiene.
- Check teat carefully before each use, especially when the child has teeth. Pull the teat in all directions and throw away at the first signs of damage or weakness.
- When first used and sometimes during use, the ventilation slit (in the raised bubble on the underside of the teat base) can stick together. This will prevent air from entering the bottle during feeding and as a result, cause the teat to collapse. Slowly brush over the bubble (ventilation) a few times with your thumb or fingers to re-open the slit.
- Dishwasher safe in top rack (max. 65°/149F) but food colourings may discolour components.
- Do not use abrasive cleaning agents. Only soft bristle brushes or soft sponges should be used.
- Sterilising using one of the following methods: steam sterilising (electric or microwave according to manufacturers instructions), boiling in water for at least 5 minutes or liquid sterilising solution.
- Do not leave the teat in direct sunlight or heat, or leave in sterilising solution for longer than recommended, as this may affect the product function.
- Do not use pin or sharp object to enlarge feeding hole.
- Store teats in a dry, sealed container.
- Insert teat into top of bottle screw ring until you hear a "click".
- Use only sugar free food or liquids.
- NEVER heat or cool a sealed bottle. Remove the protective cap and teat (with screw ring) before heating, especially before microwave heating. Take care when heating in the microwave.
- Stir thoroughly after heating to evenly distribute heat. Test the temperature before serving.
- Bottle teat fits all MAM bottles and the Trainer+.

### For your child's safety and health

#### WARNING!

- Always use this product with adult supervision.
- Never use feeding teats as a soother.
- Continuous and prolonged sucking of fluids will cause tooth decay.
- Always check food temperature before feeding.

## MAM Spill-Free Teat

This product meets EN 14350. Bottle teat fits all MAM wide neck bottles and the Trainer+.

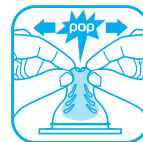
### Instruction for use:

- Clean before first and each subsequent use.
- Before first use and regularly place in boiling water for 5 minutes. This is to ensure hygiene.
- Check teat carefully before each use, especially when the child has teeth. Pull the teat in all directions and throw away at the first signs of damage or weakness.
- When first used and sometimes during use, the ventilation slit (in the raised bubble on the underside of the teat base) can stick together. This will prevent air from entering the bottle during feeding and as a result, cause the teat to collapse. Slowly brush over the bubble (ventilation) a few times with your thumb or fingers to re-open the slit.
- Dishwasher safe in top rack (max. 65°/149F) but food colourings may discolour components.
- Do not use abrasive cleaning agents. Only soft bristle brushes or soft sponges should be used.
- Sterilising using one of the following methods: steam sterilising (electric or microwave according to manufacturers instructions), boiling in water for at least 5 minutes or liquid sterilising solution.
- Do not leave the teat in direct sunlight or heat, or leave in sterilising solution for longer than recommended, as this may affect the product function.
- Do not use pin or sharp object to enlarge feeding hole.
- Store teats in a dry, sealed container.
- Insert teat into top of bottle screw ring until you hear a "click".
- Use only sugar free food or liquids.
- NEVER heat or cool a sealed bottle. Remove the protective cap and teat (with screw ring) before heating, especially before microwave heating. Take care when heating in the microwave.
- Stir thoroughly after heating to evenly distribute heat. Test the temperature before serving.
- Bottle teat fits all MAM bottles and the Trainer+.

### For your child's safety and health

#### WARNING!

- Always use this product with adult supervision.
- Never use feeding teats as a soother.
- Continuous and prolonged sucking of fluids will cause tooth decay.
- Always check food temperature before feeding.



## Extra Soft Bottle Spout

This product meets EN 14350.

### Instruction for use:

- Clean before first and each subsequent use.
- Before first use place in boiling water for 5 minutes. This is to ensure hygiene.
- Inspect carefully before each use and throw away at the first signs of damage or weakness.
- Before first use, press gently the mouthpiece of the spout to check if the slits properly open.
- When first used and sometimes for later usages, the slit in the ventilation (the raised, slit bubble on the underside of the spout base) can stick together, therefore not allowing air to enter the bottle during feeding and as a result, the spout collapsing. Slowly brush over the bubble (ventilation) a few times with your thumb or fingers to re-open the slit.
- To ensure proper cleaning/sterilising all bottle parts **MUST** be disassembled. Cleaning/sterilising while assembled can damage the product.
- Dishwasher safe in top rack (max. 65° C/149F). Food colourings may discolour components.
- Clean the mouthpiece of the spout with special care to prevent damaging the membrane. Do not use abrasive cleaning agents. Only soft bristle brushes or soft sponges should be used.
- Sterilising using one of the following methods: steam sterilising (electric or microwave according to manufacturers instructions), boiling in water for at least 5 minutes or liquid sterilising solution. After boiling or sterilising allow the spout to cool.
- Do not leave spout in direct sunlight or heat, or leave in sterilising solution for longer than recommended, as this may affect the product function.
- Do not use pin or sharp object to enlarge feeding slits.
- To avoid injury, do not let baby walk with bottle or trainer.
- Do not put your baby to bed with bottle or trainer. Prolonged contact with liquids may cause severe tooth decay.
- Use sugar free food or liquids only.
- The spout is compatible with all MAM wide neck bottles and the Trainer.
- All parts must be disassembled before heating (especially microwave heating) or cooling. Stir thoroughly after heating to evenly distribute heat. After heating allow bottle to cool.

**Assembling SPOUT:** Insert spout into top of bottle screw ring until you hear a “click”.

### For your child's safety and health

#### WARNING!

- Always use this product with adult supervision.
- Never use feeding teats as a soother.
- Continuous and prolonged sucking of fluids will cause tooth decay.
- Always check food temperature before feeding.
- Keep all components not in use out of the reach of children.
- Never use feeding spouts as a soother.



## Hold my Bottle / Hold my Cup handles

### Instruction for use:

- Clean before first and each use.
- Dishwasher safe in top rack (max. 65° C/149F).
- Before first use place in boiling water for 5 minutes. This is to ensure hygiene.
- Check sealing disc before each use and throw away at the first signs of damage or weakness.
- Always check food temperature before feeding. Stir thoroughly after heating to evenly distribute heat.
- Do not let your young child walk or crawl around with the product in his/her hand or mouth.
- The handles are made from a special high-grade plastic which is hygienic, easy to clean and resistant. Avoid heavy pressure – this could affect the efficiency.

## Sealing Discs

The sealing discs are compatible with all MAM bottles and the Trainer + which meet the requirements of EN 14350.

### Instruction for use:

- Clean before first and each subsequent use.
- Before first use place the sealing disc in boiling water for 5 minutes. This is to ensure hygiene.
- Check sealing disc before each use and throw away at the first signs of damage or weakness.
- Dishwasher safe in top rack (max. 65° C/149F) but food colourings may discolour sealing discs.
- Do not use abrasive cleaning agents as these could damage the product.
- Sterilising using one of the following methods: steam sterilising (electric or microwave according to manufacturers instructions), boiling in water or liquid sterilising solution.
- Do not leave sealing discs in direct sunlight or heat, or leave in sterilising solution for longer than recommended.
- Store sealing discs in a dry, sealed container.
- **Important:** For storing in the freezer all MAM bottles are suitable, except the MAM Easy Start Anti-Colic. The MAM Easy Start Anti-Colic should only be stored in the fridge.



**Assembling:** Pull sealing disc through the screw ring and 'click' into position.

**For your child's safety and health**

**WARNING!**

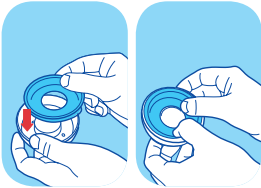
- Keep these components out of the reach of children.

## Easy Start Anti-Colic Valves

The Easy Start Anti-Colic valves are compatible with all MAM Easy Start bottles which meet the requirements of EN 14350.

**Instruction for use:**

- Clean before first and each subsequent use.
- Before first use place the sealing disc in boiling water for 5 minutes. This is to ensure hygiene.
- Check sealing disc before each use and throw away at the first signs of damage or weakness.
- Dishwasher safe in top rack (max. 65° C/149F) but food colourings may discolour sealing discs.
- Do not use abrasive cleaning agents as these could damage the product.
- Sterilising using one of the following methods: steam sterilising (electric or microwave according to manufacturers instructions), boiling in water or liquid sterilising solution.
- Do not leave sealing discs in direct sunlight or heat, or leave in sterilising solution for longer than recommended.
- Store sealing discs in a dry, sealed container.



**Assembling:** Push silicone valve into base ring. Press down on raised perimeter of silicone valve.

**For your child's safety and health**

**WARNING!**

- Keep these components out of the reach of children.

## MAM Thermal Bag

**Instruction for use:**

- Thermal Bag for storage of e.g. pre-boiled hot water or tea.
- Temperature sequence of bottle content depends on filling quantity and temperatures of liquid and environment. A temperature of about 95°C will be recommended for pre-boiled water to be poured into the bottle.
- Tip: Rinse bottle with hot water directly before use. Warning: Always check the temperature of the nutrition before feeding. Wipe clean with soapy water on a damp cloth. Please check the internal lining after each use. Remove any milk spills immediately.

**Warning:**

Place only closed baby bottles into the bottle holder. The Thermal Bag is not a toy. Product must be stored away from babies and young children's reach.

## Milk Powder Box

**Instruction for use:**

- Instruction for use:
- Clean prior to first use.
- For sterilisation, one of the following methods can be used: steam sterilising (electric or microwave according to manufacturers instructions), boiling in water or liquid sterilising solution.
- Dishwasher safe up to 65°C in top-rack.
- Always clean, sterilise and store in open position (snap covers and lid).
- Not suitable for storing liquids.
- During transportation, a non-relevant amount of powder may flow between the compartments.

**Usage:**

- The formula box consists of a bottom section with 3 compartments and a lid with 3 snap covers. The compartments are designed for large portions of formula (up to 40g /compartment).
- Remove lid.
- Ensure that all parts are completely dry.
- Fill the compartments with powder. One compartment for each portion.
- Put the lid on and ensure the snap covers are firmly closed to prevent the powder from leaking out.

- To use, fold the snap cover of the desired chamber back and hold it open with your thumb.
- Firmly close cover after use.

**For your child's safety and health**

**WARNING!**

- Keep these components out of the reach of children.

